

CorrectDeck® CX Stair Rail Assembly Instructions



CorrectDeck® CX Stair Rail Assembly Instructions

Figure B Rail Anchor Ball Location Chart

Align this edge with mark on post for proper top and bottom rail location.

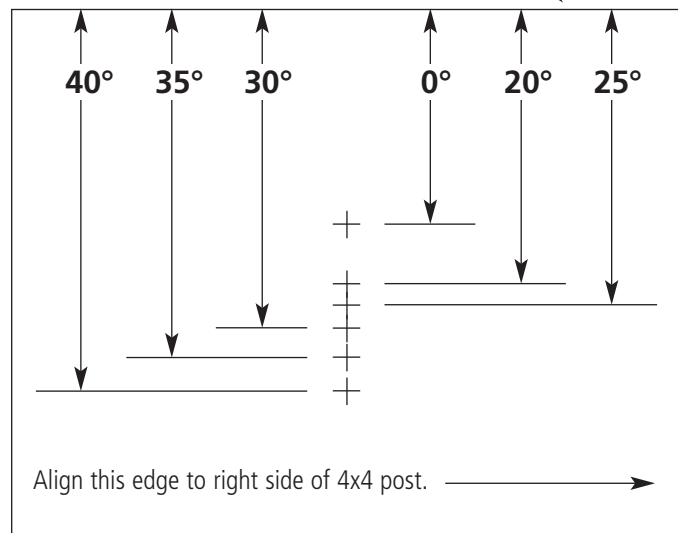


Figure C Stair Angle Rise and Run Dimensions

| RUN: | 8" | 8.5" | 9" | 9.5" | 10" | 10.5" | 11" | 11.5" | 12" | 12.5" | 13" | 13.5" | 14" |
|-------|-----|------|-----|------|-----|-------|-----|-------|-----|-------|-----|-------|-----|
| RISE: | | | | | | | | | | | | | |
| 5.00" | 32° | 30° | 29° | 28° | 27° | 25° | 24° | 23° | 23° | 22° | 21° | 20° | 20° |
| 5.25" | 33° | 32° | 30° | 29° | 28° | 27° | 26° | 25° | 24° | 23° | 22° | 21° | 21° |
| 5.50" | 35° | 33° | 31° | 30° | 29° | 28° | 27° | 26° | 25° | 24° | 23° | 22° | 21° |
| 5.75" | 36° | 34° | 33° | 31° | 30° | 29° | 28° | 27° | 26° | 25° | 24° | 23° | 22° |
| 6.00" | 37° | 35° | 34° | 32° | 31° | 30° | 29° | 28° | 27° | 26° | 25° | 24° | 23° |
| 6.25" | 38° | 36° | 35° | 33° | 32° | 31° | 30° | 29° | 28° | 27° | 26° | 25° | 24° |
| 6.50" | 39° | 37° | 36° | 34° | 33° | 31° | 30° | 29° | 28° | 27° | 26° | 25° | 24° |
| 6.75" | 40° | 38° | 37° | 35° | 34° | 33° | 32° | 30° | 29° | 28° | 27° | 26° | 25° |
| 7.00" | 41° | 39° | 38° | 36° | 35° | 34° | 32° | 31° | 30° | 29° | 28° | 27° | 27° |
| 7.25" | 42° | 40° | 39° | 37° | 36° | 35° | 33° | 32° | 31° | 30° | 29° | 28° | 27° |
| 7.50" | 43° | 41° | 40° | 38° | 37° | 36° | 34° | 33° | 32° | 31° | 30° | 29° | 28° |
| 7.75" | 44° | 42° | 41° | 39° | 38° | 36° | 35° | 34° | 33° | 32° | 31° | 30° | 29° |

Figure A Baluster Spacing by Stair Angle

| Stair Angle: | 25° | | 26° | | 27° | | 28° | | 29° | | 30° | | 31° | | 32° | | 33° | | 34° | | 35° | | |
|--------------|-----------------------------------|---------------------|-----------------------------------|---------------------|-----------------------------------|---------------------|-----------------------------------|---------------------|-----------------------------------|---------------------|-----------------------------------|---------------------|-----------------------------------|---------------------|-----------------------------------|---------------------|-----------------------------------|---------------------|-----------------------------------|---------------------|-----------------------------------|---------------------|---------|
| | PERCENTAGE DISTANCE BETWEEN POSTS | NUMBER OF BALUSTERS | PERCENTAGE DISTANCE BETWEEN POSTS | NUMBER OF BALUSTERS | PERCENTAGE DISTANCE BETWEEN POSTS | NUMBER OF BALUSTERS | PERCENTAGE DISTANCE BETWEEN POSTS | NUMBER OF BALUSTERS | PERCENTAGE DISTANCE BETWEEN POSTS | NUMBER OF BALUSTERS | PERCENTAGE DISTANCE BETWEEN POSTS | NUMBER OF BALUSTERS | PERCENTAGE DISTANCE BETWEEN POSTS | NUMBER OF BALUSTERS | PERCENTAGE DISTANCE BETWEEN POSTS | NUMBER OF BALUSTERS | PERCENTAGE DISTANCE BETWEEN POSTS | NUMBER OF BALUSTERS | PERCENTAGE DISTANCE BETWEEN POSTS | NUMBER OF BALUSTERS | PERCENTAGE DISTANCE BETWEEN POSTS | NUMBER OF BALUSTERS | |
| 36 | 7 | 4:1/16 | 5:1/8 | 4:1/2 | 5:3/16 | 4:1/2 | 5:1/4 | 4:9/16 | 5:1/4 | 4:5/8 | 5:5/16 | 5:3/8 | 4:11/16 | 5:3/8 | 4:11/16 | 5:3/8 | 4:11/16 | 5:3/8 | 4:11/16 | 5:3/8 | 4:11/16 | 5:3/8 | |
| 37 | 7 | 4:9/16 | 5:1/4 | 4:5/8 | 5:1/6 | 4:11/16 | 5:3/8 | 4:11/16 | 5:3/8 | 4:11/16 | 5:3/8 | 4:11/16 | 5:3/8 | 4:11/16 | 5:3/8 | 4:11/16 | 5:3/8 | 4:11/16 | 5:3/8 | 4:11/16 | 5:3/8 | 4:11/16 | 5:3/8 |
| 38 | 7 | 4:3/4 | 5:7/16 | 4:3/4 | 5:7/16 | 4:13/16 | 5:1/2 | 4:7/8 | 5:9/16 | 4:7/8 | 5:9/16 | 5:1/2 | 5:11/16 | 5:1/2 | 5:11/16 | 5:1/2 | 5:11/16 | 5:1/2 | 5:11/16 | 5:1/2 | 5:11/16 | 5:1/2 | |
| 39 | 7 | 4:7/8 | 5:9/16 | 4:7/8 | 5:5/8 | 4:15/16 | 5:5/8 | 4:15/16 | 5:5/8 | 4:15/16 | 5:5/8 | 4:15/16 | 5:5/8 | 4:15/16 | 5:5/8 | 4:15/16 | 5:5/8 | 4:15/16 | 5:5/8 | 4:15/16 | 5:5/8 | 4:15/16 | 5:5/8 |
| 40 | 8 | 4:3/8 | 5:1/16 | 4:3/8 | 5:1/8 | 4:11/16 | 5:1/8 | 4:11/16 | 5:1/8 | 4:11/16 | 5:1/8 | 4:11/16 | 5:1/8 | 4:11/16 | 5:1/8 | 4:11/16 | 5:1/8 | 4:11/16 | 5:1/8 | 4:11/16 | 5:1/8 | 4:11/16 | 5:1/8 |
| 41 | 8 | 4:1/2 | 5:3/16 | 4:1/2 | 5:1/4 | 4:9/16 | 5:1/4 | 4:9/16 | 5:1/4 | 4:9/16 | 5:1/4 | 4:9/16 | 5:1/4 | 4:9/16 | 5:1/4 | 4:9/16 | 5:1/4 | 4:9/16 | 5:1/4 | 4:9/16 | 5:1/4 | 4:9/16 | 5:1/4 |
| 42 | 8 | 4:5/8 | 5:5/16 | 4:5/8 | 5:3/8 | 4:11/16 | 5:3/8 | 4:11/16 | 5:3/8 | 4:11/16 | 5:3/8 | 4:11/16 | 5:3/8 | 4:11/16 | 5:3/8 | 4:11/16 | 5:3/8 | 4:11/16 | 5:3/8 | 4:11/16 | 5:3/8 | 4:11/16 | 5:3/8 |
| 43 | 8 | 4:3/4 | 5:7/16 | 4:3/4 | 5:1/2 | 4:13/16 | 5:1/2 | 4:13/16 | 5:1/2 | 4:13/16 | 5:1/2 | 4:13/16 | 5:1/2 | 4:13/16 | 5:1/2 | 4:13/16 | 5:1/2 | 4:13/16 | 5:1/2 | 4:13/16 | 5:1/2 | 4:13/16 | 5:1/2 |
| 44 | 8 | 4:7/8 | 5:9/16 | 4:7/8 | 5:5/8 | 4:15/16 | 5:5/8 | 4:15/16 | 5:5/8 | 4:15/16 | 5:5/8 | 4:15/16 | 5:5/8 | 4:15/16 | 5:5/8 | 4:15/16 | 5:5/8 | 4:15/16 | 5:5/8 | 4:15/16 | 5:5/8 | 4:15/16 | 5:5/8 |
| 45 | 9 | 4:7/16 | 5:1/8 | 4:7/16 | 5:1/8 | 4:7/16 | 5:1/8 | 4:7/16 | 5:1/8 | 4:7/16 | 5:1/8 | 4:7/16 | 5:1/8 | 4:7/16 | 5:1/8 | 4:7/16 | 5:1/8 | 4:7/16 | 5:1/8 | 4:7/16 | 5:1/8 | 4:7/16 | 5:1/8 |
| 46 | 9 | 4:1/2 | 5:3/16 | 4:1/2 | 5:1/4 | 4:9/16 | 5:1/4 | 4:9/16 | 5:1/4 | 4:9/16 | 5:1/4 | 4:9/16 | 5:1/4 | 4:9/16 | 5:1/4 | 4:9/16 | 5:1/4 | 4:9/16 | 5:1/4 | 4:9/16 | 5:1/4 | 4:9/16 | 5:1/4 |
| 47 | 9 | 4:5/8 | 5:5/16 | 4:5/8 | 5:3/8 | 4:11/16 | 5:3/8 | 4:11/16 | 5:3/8 | 4:11/16 | 5:3/8 | 4:11/16 | 5:3/8 | 4:11/16 | 5:3/8 | 4:11/16 | 5:3/8 | 4:11/16 | 5:3/8 | 4:11/16 | 5:3/8 | 4:11/16 | 5:3/8 |
| 48 | 9 | 4:3/4 | 5:7/16 | 4:3/4 | 5:1/2 | 4:13/16 | 5:1/2 | 4:13/16 | 5:1/2 | 4:13/16 | 5:1/2 | 4:13/16 | 5:1/2 | 4:13/16 | 5:1/2 | 4:13/16 | 5:1/2 | 4:13/16 | 5:1/2 | 4:13/16 | 5:1/2 | 4:13/16 | 5:1/2 |
| 49 | 9 | 4:7/8 | 5:9/16 | 4:7/8 | 5:5/8 | 4:15/16 | 5:5/8 | 4:15/16 | 5:5/8 | 4:15/16 | 5:5/8 | 4:15/16 | 5:5/8 | 4:15/16 | 5:5/8 | 4:15/16 | 5:5/8 | 4:15/16 | 5:5/8 | 4:15/16 | 5:5/8 | 4:15/16 | 5:5/8 |
| 50 | 10 | 4:7/16 | 5:1/8 | 4:7/16 | 5:1/8 | 4:7/16 | 5:1/8 | 4:7/16 | 5:1/8 | 4:7/16 | 5:1/8 | 4:7/16 | 5:1/8 | 4:7/16 | 5:1/8 | 4:7/16 | 5:1/8 | 4:7/16 | 5:1/8 | 4:7/16 | 5:1/8 | 4:7/16 | 5:1/8 |
| 51 | 10 | 4:9/16 | 5:1/4 | 4:9/16 | 5:1/4 | 4:9/16 | 5:1/4 | 4:9/16 | 5:1/4 | 4:9/16 | 5:1/4 | 4:9/16 | 5:1/4 | 4:9/16 | 5:1/4 | 4:9/16 | 5:1/4 | 4:9/16 | 5:1/4 | 4:9/16 | 5:1/4 | 4:9/16 | 5:1/4 |
| 52 | 10 | 4:5/8 | 5:5/16 | 4:5/8 | 5:3/8 | 4:11/16 | 5:3/8 | 4:11/16 | 5:3/8 | 4:11/16 | 5:3/8 | 4:11/16 | 5:3/8 | 4:11/16 | 5:3/8 | 4:11/16 | 5:3/8 | 4:11/16 | 5:3/8 | 4:11/16 | 5:3/8 | 4:11/16 | 5:3/8 |
| 53 | 10 | 4:3/4 | 5:7/16 | 4:3/4 | 5:1/2 | 4:13/16 | 5:1/2 | 4:13/16 | 5:1/2 | 4:13/16 | 5:1/2 | 4:13/16 | 5:1/2 | 4:13/16 | 5:1/2 | 4:13/16 | 5:1/2 | 4:13/16 | 5:1/2 | 4:13/16 | 5:1/2 | 4:13/16 | 5:1/2 |
| 54 | 10 | 4:7/8 | 5:9/16 | 4:7/8 | 5:5/8 | 4:15/16 | 5:5/8 | 4:15/16 | 5:5/8 | 4:15/16 | 5:5/8 | 4:15/16 | 5:5/8 | 4:15/16 | 5:5/8 | 4:15/16 | 5:5/8 | 4:15/16 | 5:5/8 | 4:15/16 | 5:5/8 | 4:15/16 | 5:5/8 |
| 55 | 10 | 4:15/16 | 5:5/8 | 5 | 5:11/16 | 5 | 5:11/16 | 5 | 5:11/16 | 5 | 5:11/16 | 5 | 5:11/16 | 5 | 5:11/16 | 5 | 5:11/16 | 5 | 5:11/16 | 5 | 5:11/16 | 5 | 5:11/16 |
| 56 | 11 | 4:9/16 | 5:1/4 | 4:9/16 | 5:1/4 | 4:9/16 | 5:1/4 | 4:9/16 | 5:1/4 | 4:9/16 | 5:1/4 | 4:9/16 | 5:1/4 | 4:9/16 | 5:1/4 | 4:9/16 | 5:1/4 | 4:9/16 | 5:1/4 | 4:9/16 | 5:1/4 | 4:9/16 | 5:1/4 |
| 57 | 11 | 4:11/16 | 5:3/8 | 4:11/16 | 5:3/8 | 4:11/16 | 5:3/8 | 4:11/16 | 5:3/8 | 4:11/16 | 5:3/8 | 4:11/16 | 5:3/8 | 4:11/16 | 5:3/8 | 4:11/16 | 5:3/8 | 4:11/16 | 5:3/8 | 4:11/16 | 5:3/8 | 4:11/16 | 5:3/8 |
| 58 | 11 | 4:3/4 | 5:7/16 | 4:3/4 | 5:1/2 | 4:13/16 | 5:1/2 | 4:13/16 | 5:1/2 | 4:13/16 | 5:1/2 | 4:13/16 | 5:1/2 | 4:13/16 | 5:1/2 | 4:13/16 | 5:1/2 | 4:13/16 | 5:1/2 | 4:13/16 | 5:1/2 | 4:13/16 | 5:1/2 |
| 59 | 11 | 4:7/8 | 5:9/16 | 4:7/8 | 5:5/8 | 4:15/16 | 5:5/8 | 4:15/16 | 5:5/8 | 4:15/16 | 5:5/8 | 4:15/16 | 5:5/8 | 4:15/16 | 5:5/8 | 4:15/16 | 5:5/8 | 4:15/16 | 5:5/8 | 4:15/16 | 5:5/8 | 4:15/16 | 5:5/8 |
| 60 | 11 | 4:1/2 | 5:3/16 | 4:1/2 | 5:1/4 | 4:9/16 | 5:1/4 | 4:9/16 | 5:1/4 | 4:9/16 | 5:1/4 | 4:9/16 | 5:1/4 | 4:9/16 | 5:1/4 | 4:9/16 | 5:1/4 | 4:9/16 | 5:1/4 | 4:9/16 | 5:1/4 | 4:9/16 | 5:1/4 |
| 61 | 12 | 4:5/8 | 5:5/16 | 4:5/8 | 5:3/8 | 4:11/16 | 5:3/8 | 4:11/16 | 5:3/8 | 4:11/16 | 5:3/8 | 4:11/16 | 5:3/8 | 4:11/16 | 5:3/8 | 4:11/16 | 5:3/8 | 4:11/16 | 5:3/8 | 4:11/16 | 5:3/8 | 4:11/16 | 5:3/8 |
| 62 | 12 | 4:11/16 | 5:3/8 | 4:11/16 | 5:3/8 | 4:11/16 | 5:3/8 | 4:11/16 | 5:3/8 | 4:11/16 | 5:3/8 | 4:11/16 | 5:3/8 | 4:11/16 | 5:3/8 | 4:11/16 | 5:3/8 | 4:11/16 | 5:3/8 | 4:11/16 | 5:3/8 | 4:11/16 | 5:3/8 |
| 63 | 12 | 4:3/4 | 5:7/16 | 4:3/4 | 5:1/2 | 4:13/16 | 5:1/2 | 4:13/16 | 5:1/2 | 4:13/16 | 5:1/2 | 4:13/16 | 5:1/2 | 4:13/16 | 5:1/2 | 4:13/16 | 5:1/2 | 4:13/16 | 5:1/2 | 4:13/16 | 5:1/2 | 4:13/16 | 5:1/2 |
| 64 | 12 | 4:7/8 | 5:9/16 | 4:7/8 | 5:5/8 | 4:15/16 | 5:5/8 | 4:15/16 | 5:5/8 | 4:15/16 | 5:5/8 | 4:15/16 | 5:5/8 | 4:15/16 | 5:5/8 | 4:15/16 | 5:5/8 | 4:15/16 | 5:5/8 | 4:15/16 | 5:5/8 | 4:15/16 | 5:5/8 |
| 65 | 12 | 4:15/16 | 5:5/8 | 5 | 5:11/16 | 5 | 5:11/16 | 5 | 5:11/16 | 5 | 5:11/16 | 5 | 5:11/16 | 5 | 5:11/16 | 5 | 5:11/16 | 5 | 5:11/16 | 5 | 5:11/16 | 5 | 5:11/16 |
| 66 | 13 | 4:5/8 | 5:5/16 | 4:5/8 | 5:3/8 | 4:11/16 | 5:3/8 | 4:11/16 | 5:3/8 | 4:11/16 | 5:3/8 | 4:11/16 | 5:3/8 | 4:11/16 | 5:3/8 | 4:11/16 | 5:3/8 | 4:11/16 | 5:3/8 | 4:11/16 | 5:3/8 | 4:11/16 | 5:3/8 |
| 67 | 13 | 4:11/16 | 5:3/8 | 4:11/16 | 5:3/8 | 4:11/16 | 5:3/8 | 4:11/16 | 5:3/8 | 4:11/16 | 5:3/8 | 4:11/16 | 5:3/8 | 4:11/16 | 5:3/8 | 4:11/16 | 5:3/8 | 4:11/16 | 5:3/8 | 4:11/16 | 5:3/8 | 4:11/16 | 5:3/8 |
| 68 | 13 | 4:3/4 | 5:7/16 | 4:3/4 | 5:1/2 | 4:13/16 | 5:1/2 | 4:13/16 | 5:1/2 | 4:13/16 | 5:1/2 | 4:13/16 | 5:1/2 | 4:13/16 | 5:1/2 | 4:13/16 | 5:1/2 | 4:13/16 | 5:1/2 | 4:13/16 | 5:1/2 | 4:13/16 | 5:1/2 |
| 69 | 13 | 4:7/8 | 5:9/16 | 4:7/8 | 5:5/8 | 4:15/16 | 5:5/8 | 4:15/16 | 5:5/8 | 4:15/16 | 5:5/8 | 4:15/16 | 5:5/8 | 4:15/16 | 5:5/8 | 4:15/16 | 5:5/8 | 4:15/16 | 5:5/8 | 4:15/16 | 5:5/8 | 4:15/16 | 5:5/8 |
| 70 | 13 | 4:1/2 | 5:3/16 | 4:1/2 | 5:1/4 | 4:9/16 | 5:1/4 | 4:9/16 | 5:1/4 | 4:9/16 | 5:1/4 | 4:9/16 | 5:1/4 | 4:9/16 | 5:1/4 | 4:9/16 | 5:1/4 | 4:9/16 | 5:1/4 | 4:9/16 | 5:1/4 | 4:9/16 | 5:1/4 |
| 71 | 14 | 4:5/8 | 5:5/16 | 4:5/8 | 5:3/8 | 4:11/16 | 5:3/8 | 4:11/16 | 5:3/8 | 4:11/16 | 5:3/8 | 4:11/16 | 5:3/8 | 4:11/16 | 5:3/8 | 4:11/16 | 5:3/8 | 4:11/16 | 5:3/8 | 4:11/16 | 5:3/8 | 4:11/16 | 5:3/8 |
| 72 | 14 | 4:11/16 | 5:3/8 | 4:11/16 | 5:3/8 | 4:11/16 | 5:3/8 | 4:11/16 | 5:3/8 | 4:11/16 | 5:3/8 | 4:11/16 | 5:3/8 | 4:11/16 | 5:3/8 | 4:11/16 | 5:3/8 | 4:11/16 | 5:3/8 | 4:11/16 | 5:3/8 | 4:11/16 | 5:3/8 |
| 73 | 14 | 4:3/4 | 5:7/16 | 4:3/4 | 5:1/2 | 4:13/16 | 5:1/2 | 4:13/16 | | | | | | | | | | | | | | | |

CorrectDeck® CX Stair Rail Assembly Instructions

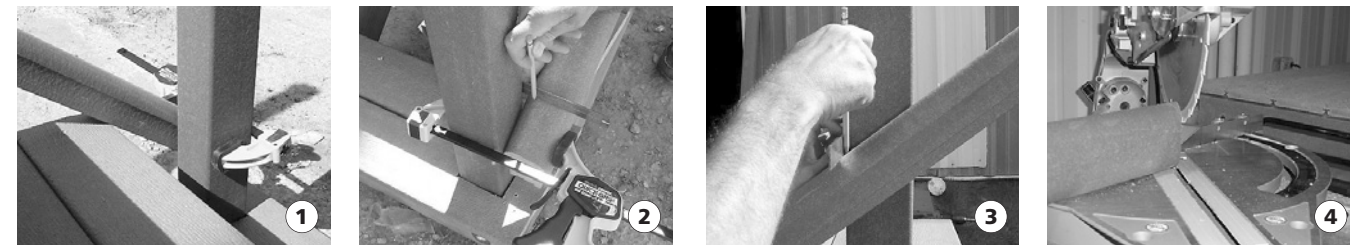
These instructions are intended to guide you through the process of assembling your new stair rail kit. While there are several ways of approaching this project, we have found this approach to be the simplest while insuring the final results will meet your expectations of a CorrectDeck® product.

A couple of key items to remember as you go through this process:

- Check that both the top and bottom newel posts are straight and parallel to one another.
- Align balusters along the centerline of the rail sections.
- Check the rise and run of the stairs to determine the proper cut angle of the rail components (reference enclosed chart).
- Pre-drill all holes prior to attaching hardware.
- Before beginning the assembly process, install post skirts (option) if so equipped.

1 Measure and cut top/bottom rail sections

With newel posts secured, set one of the rails on the stairs, mark the length and angle. (Photo 1, 2, 3) Cut both rail sections. (Photo 4)

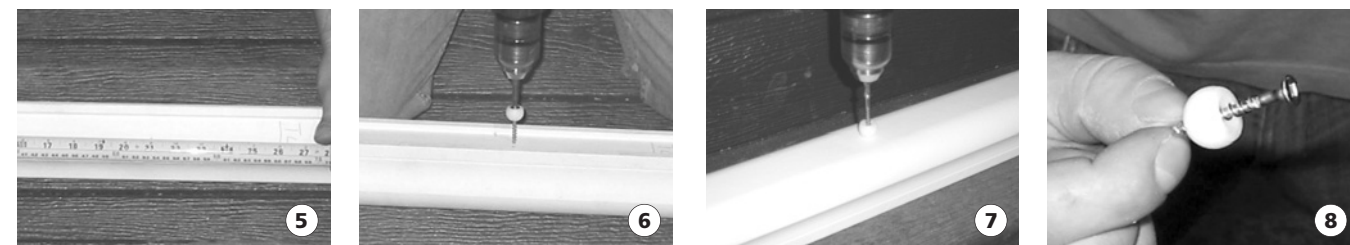


2 Lay out and attach baluster connectors

Select which rail is to be used for the top and bottom sections of the assembly. For the top, the channel on the underside of the rail will receive the baluster connectors. The bottom rail will have the connectors screwed into the top rounded section of the rail.

To have evenly spaced stair rail balusters, follow instructions below. Otherwise, span the balusters 3-1/2" apart starting from the center of the rail and let the remaining difference fall within the spaces adjacent to the two 4 x 4 posts. Measure the horizontal distance between the top and bottom newel posts. Find that measurement on the left side of the chart titled Baluster Spacing by Stair Angle (Figure A). The column to the right of that dimension indicates the number of balusters required to complete the assembly.

Locate the correct stair angle at the top of the chart. In order to have equally spaced balusters that result in gaps less than 4" (code requirement), two numbers are shown at the intersection of the column and row; the on center (O.C.) location of the first and last balusters relative to the top and bottom posts, then the O.C. locations of all the others. Mark these dimensions along the centerline of both top and bottom rail surfaces, and then insert a 5/8" diameter ball connector at each location using the #8 x 1-5/8" stainless steel screws. (Photo 5, 6, 7)

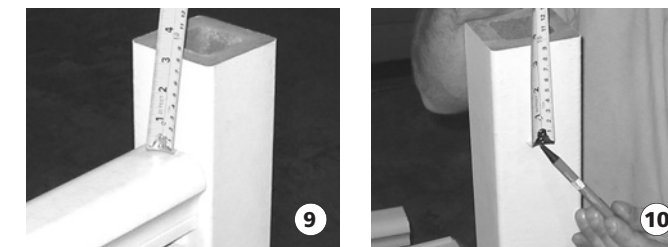


Note: it is important to insert the screw into the chamfered end of the ball connector's center hole so the head sets flush with the face of the ball. (Photo 8)

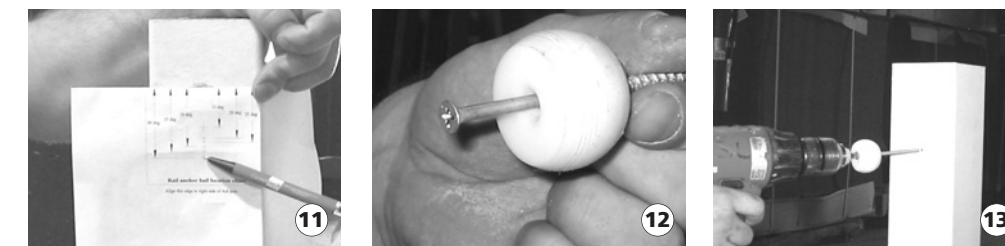
CorrectDeck® CX Stair Rail Assembly Instructions

3 Install rail connectors

The two larger ball connectors are used to secure both top and bottom rails to the top newel post. This method eliminates the problems associated with the limited work space under the rails, and completely hides the fastener, resulting in a cleaner looking assembly. To properly locate the two ball connectors, measure the distance from the top of the newel post to the top of the two rails on the horizontal sections of RapidRail on the deck. Transfer dimensions to the face of the post that will receive the stair rails. (Photo 9, 10) Note: Depending upon the location of the post relative to the edge of the deck and first step, it may not be possible to align the the stair rail with the horizontal deck rail. If this condition exists, simply block up the bottom stair rail with a section of 4x4 (or 2x4 on edge) and mark the location of the top edge of the rail as where it intersects the post. This mark will now be the location point for the drill chart (Figure B) illustrated in the next step.



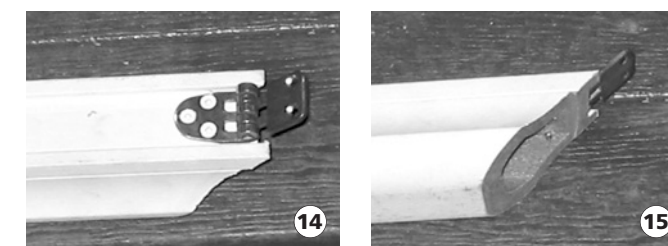
Cut out the drill chart (Figure B) and align the top with the marks on the post and the right edge of the chart with the right edge of the post. Select the cross hair location that best matches the angle of the stairs. (You may have to work in between the 6 angles shown for your particular application.) Drill the 1/8" pilot hole for the 1/4" x 4-1/2" anchor screw at that location. (Photo 11 – See Figure B) Install the ball connector, making sure the screws are sufficiently threaded into the post so as to penetrate the opposite wall (applies only to CorrectDeck's CX 4x4). (Photo 12, 13)



Note: If a CorrectDeck surface mount attachment is used to secure the 4x4 post to the deck, you must first drill a pilot through both walls of the pipe section and use a 1/4" x 3" self-tapping screw (not included) to secure the bottom ball connector to the post

4 Attach rail hinge bracket

A hinge is used at the bottom of both rail/post sections to accommodate a variety of stair angles. Align the 3-hole section of the hinge inside the channel of the top rail. (Photo 14, 15) Make sure the hinge does not protrude beyond the angle cut as it will prevent the rail from fitting tightly against the post. Repeat for the bottom rail.



CorrectDeck® CX Stair Rail Assembly Instructions

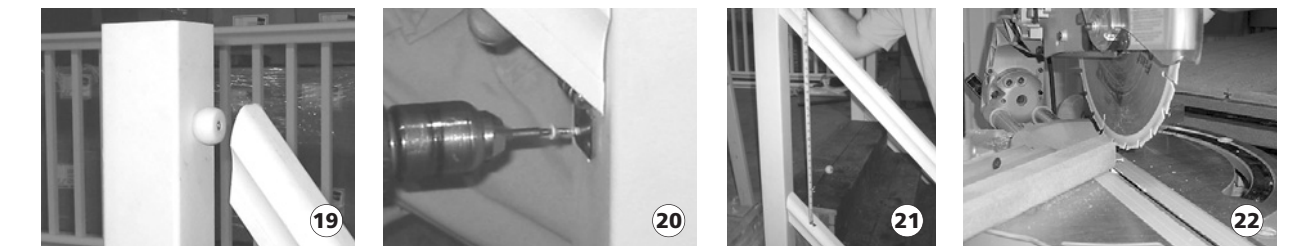
5 Install bottom rail section

Place one end of the bottom rail onto the bottom ball connector and press into position until flush with the face of the post. (Photo 16, 17) Pull up on the opposite end until it locks up against the inside of the post. Complete the attachment by screwing the second half of the hinge into the post (Photo 18).



6 Temporarily install top rail section

In order to obtain an accurate baluster length, you will need to temporarily install the top rail section. Place one end onto the top ball connector; firmly press it into position until flush with the face of the post. Pull up on the opposite end of the rail until it comes in contact with the post. Either temporarily install one screw into the hinge or have someone hold it in place. Measure the distance between the top and bottom rails at both ends of the rail section to insure they are parallel. (Photo 19, 20, 21) Adjust as required. Cut balusters to the proper length and angle. (Photo 22)



7 Install balusters and top rail

Remove the top rail and install the top baluster first into the bottom connector. Place the top rail onto its ball connector and hold it slightly rotated toward the inside of the stairs to allow the baluster connector to slide into the baluster hole. Place the second baluster into its bottom connector and slowly rotate the rail inward slightly while aligning the top connector into the baluster hole. (Photo 23, 24) Continue this process with each baluster until the last one is in place and the rail is in its final position against the post. Press the rail down onto the balusters to fully seat them. Screw the hinge to the post with the remaining screws. (Photo 25)



8 Install post caps & tap gently into place (Photo 26)